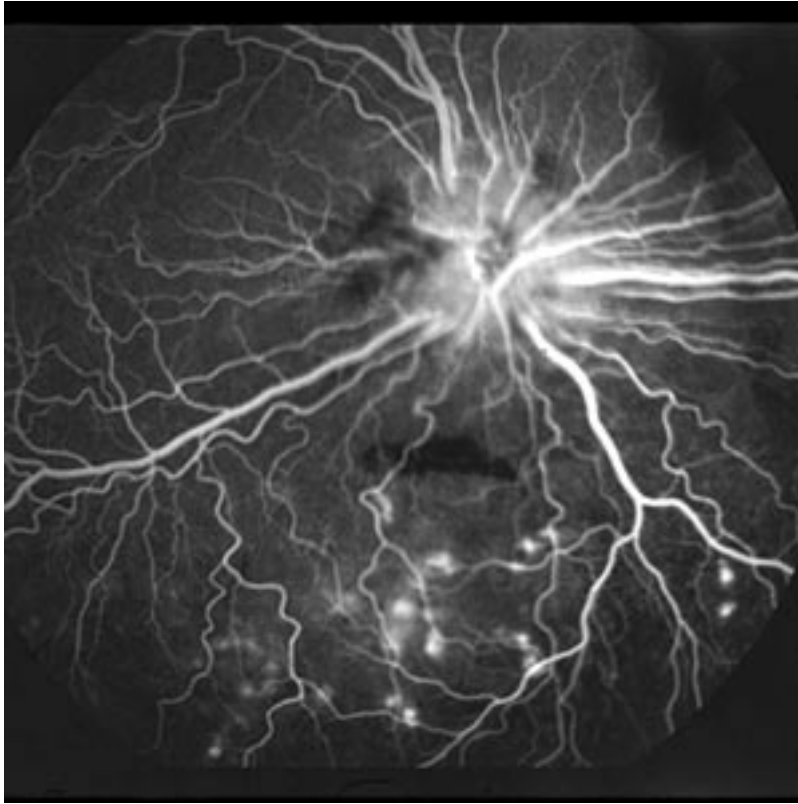


Ophthalmology Photos



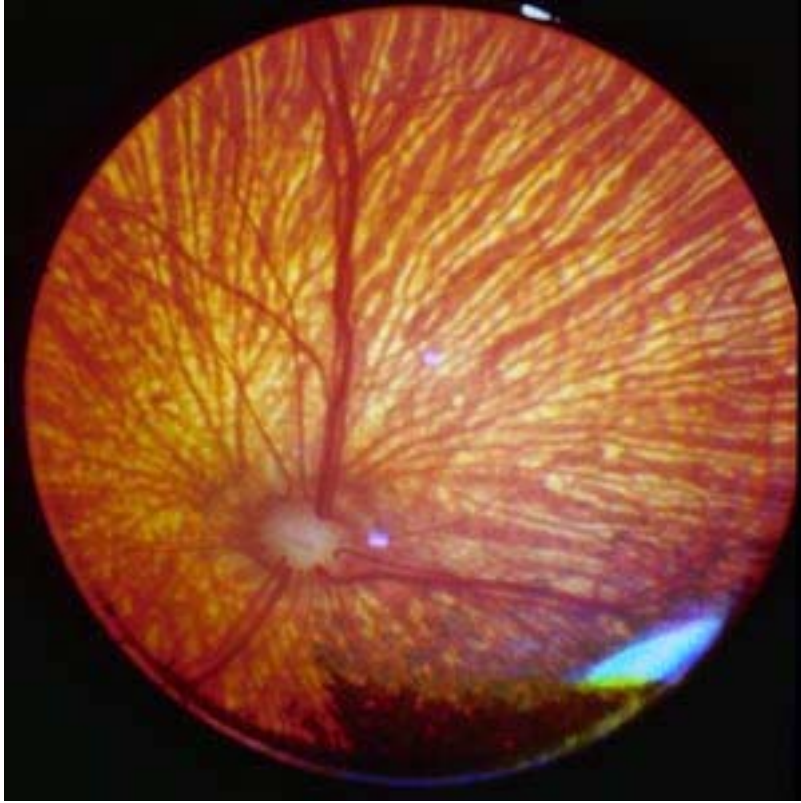
FA25: A fluorescein angiography demonstrating optic neuritis, retinal flame hemorrhages and vascular leakage in a dog with chorioretinitis



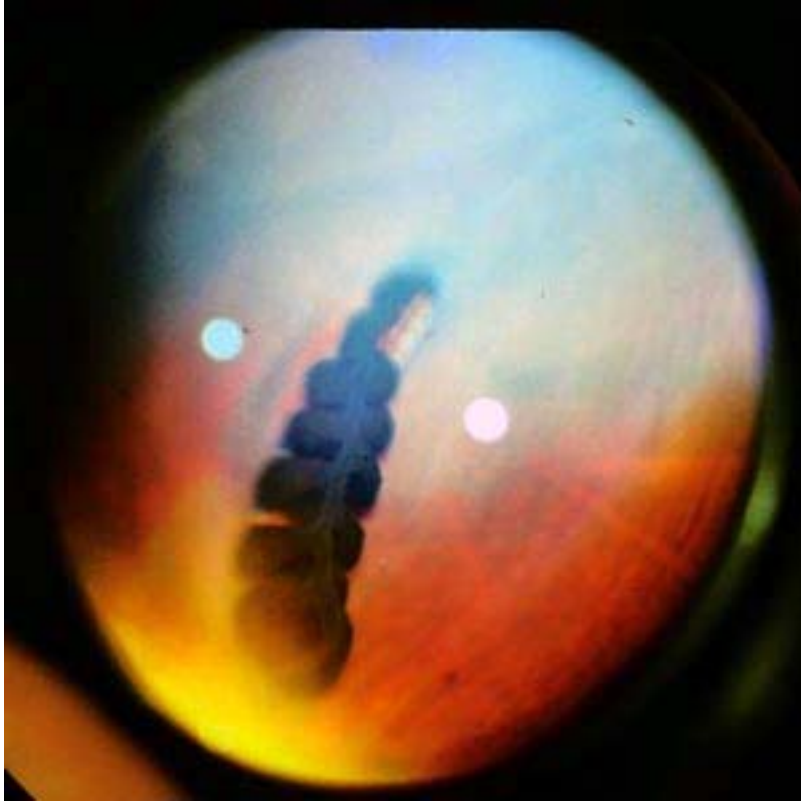
Llama-eye: A normal llama eye with the undulating "corpora nigra" or "granula iridica" at the dorsal margin of the pupil



RETINA005: A normal canine retina



RETINA011: A normal canine retina in a dog with no tapetum lucidum or choroidal pigment



RETINA018: A normal owl retina