



## SVM UPDATE FEBRUARY 2009

Welcome to the **February 2009** edition of the LSU SVM's e-mail newsletter. In this issue, we'll talk about the 27<sup>th</sup> Annual [Open House](#), the LSU SVM's [new CT capability](#), [new equipment and facilities](#) in the Veterinary Teaching Hospital, how the [LSU SVM's mobile unit](#) is used to help care for shelter animals, [alumni events](#), [supporting the SVM](#), [upcoming events](#), and [classified ads](#).

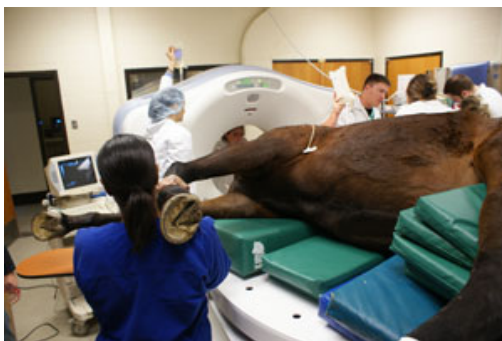


## LSU SVM HOSTS 27<sup>TH</sup> ANNUAL OPEN HOUSE

The LSU School of Veterinary Medicine will host its 27th Annual Open House on Saturday, February 7, from 9:00 a.m. to 4:00 p.m. **The event is free and open to the public.** This year's theme is **Where's Mike?** Photographs of Mike the Tiger will be hidden along the Paw Print Trail that takes visitors through the Veterinary Medicine Building. The spirit of Mike the Tiger is everywhere, just as veterinarians touch many different aspects of life aside from pet care (e.g., military, food safety, animal welfare, and biomedical research).

For more information, go to [http://www.vetmed.lsu.edu/open\\_house.htm](http://www.vetmed.lsu.edu/open_house.htm).

[Back to the top](#)



## DIAGNOSTIC IMAGING SERVICE PROVIDES CT CAPABILITY FOR ANIMALS GREAT AND SMALL

In 2008, the LSU Veterinary Teaching Hospital replaced its old CT unit with a new GE Lightspeed 16-slice CT scanner, the ultimate in veterinary cross-sectional imaging. The Hospital also acquired a new, state-of-the-art equine CT table, capable of holding up to 2,000 pounds. The table is a revolutionary and unique, patented design that allows the horse to "float" on a lazy susan mechanism for positioning in many different ways, depending on the region of interest. LSU is one of only a few schools to have this type of custom-built equine table. The new 16-slice CT scanner is so fast that the skull or extremity can be examined in less than 30 seconds, reducing

anesthesia time. With the addition of this table, LSU is only one of a few facilities in the United States with this type of diagnostic imaging technology for horses. *For information about the LSU SVM's diagnostic imaging service, go to <http://radiology.vetmed.lsu.edu/>.*

[Back to the top](#)



## VETERINARY TEACHING HOSPITAL UPDATES FACILITIES

The Cardiac Catheterization Laboratory, also called the cath lab, is up and running. The cath lab is used for a variety of heart tests (diagnostic catheterization) and to make repairs to hearts (interventional catheterization). The procedures most frequently performed include pacemaker implantation, balloon valvuloplasty of the pulmonic valve and patent ductus arteriosus occlusion. The cath lab is equipped with a state of the art C-arm (Pulsera 12 – Philips Medical), which provides 2-D imaging and can be rotated to provide a variety of view planes; a Transesophageal ultrasound system (Philips medical); a surgical C-arm table (Biodex); cardiac monitors (Biopac system); an angiographic injection system (Medrad); and a large inventory of catheters. *For more information about the LSU SVM's cardiology service, go to <http://cardiology.vetmed.lsu.edu>.*

The LSU SVM has started construction on a room that will hold an MRI. The room is located in the Veterinary Teaching Hospital on the first floor and will be also be accessible from barn, so imaging can be done on both large and small animals. The Hitachi 1.5 Tesla Magnet should be installed and operational by April 2009. *For information about the LSU SVM's Veterinary Teaching Hospital, go to <http://www.vetmed.lsu.edu/vth&c>.*

[Back to the top](#)



## LSU VETERINARY SCHOOL USES MOBILE UNIT TO HELP CARE FOR SHELTER ANIMALS

In January 2009, the LSU SVM began taking a custom-made trailer to south Louisiana animal shelters as part of its shelter medicine curriculum. Sponsored in part by a grant from the Humane Society of the United States, this curriculum provides medical care and spay/neuter services for animal shelters while simultaneously educating veterinary students about primary veterinary care and shelter medicine. Students sign up for a two-week block, and go with Dr. Wendy Wolfson (LSU 1986), instructor, to the various shelters. The group travels by van to some of the shelters, but for those shelters that do not have surgical suites, Dr. Wolfson and her students bring the SVM's mobile emergency response unit. *For more information about the mobile unit, go to [http://www.vetmed.lsu.edu/news & events.htm#Shelter Animals/](http://www.vetmed.lsu.edu/news & events.htm#Shelter_Animals/).*

[Back to the top](#)



## UPCOMING ALUMNI EVENTS

On February 6 at 6 p.m., the LSU SVM will host an alumni and friends reception at the **Louisiana Veterinary Medical Association Winter Meeting** in the River Room in the Riverside Building of the Hilton in New Orleans, La.

On February 7 at 5:45 p.m., the LSU SVM will host an alumni and friends reception at the **Arkansas Veterinary Medical Association Winter Meeting** in Room 205 in the Convention Center in Hot Springs, Ark.

On February 16, the LSU SVM will host a hospital suite for alumni and friends from 7 a.m. to 5:30 p.m. at the **Western Veterinary Conference** in the Coral Suite on the 61<sup>st</sup> floor of Mandalay Bay in Las Vegas, N.V.

On November 7, the **Classes of 1979, 1984, 1989, 1994, 1999, and 2004** will celebrate their milestone reunions (thirty, twenty-five, twenty, fifteen, ten and five years, respectively). These reunions will take place following the Annual Conference, which will be held on the same day. **For information on these alumni events, contact Gretchen Morgan at [gmorgan@lsu.edu](mailto:gmorgan@lsu.edu) or 225-578-9565. For information on other upcoming alumni activities, go to [http://www.vetmed.lsu.edu/svm\\_alumni\\_&\\_donors.htm](http://www.vetmed.lsu.edu/svm_alumni_&_donors.htm) and click on Alumni Activities.**

[Back to the top](#)



## SUPPORT THE LSU SVM

### TIGERTALK TO BEGIN CALLING VETERINARY ALUMNI SOON

LSU SVM alumni will begin receiving calls from students working on behalf of TigerTalk later this month. From February 16-21, 2009, students will be working the phones in an effort to raise funds for the school.

TigerTalk is a student telefund center created by the LSU Foundation to generate donations for the university. This initiative gives alumni and friends an opportunity to reconnect with the LSU SVM. Funds are used to support student and faculty educational activities, scholarships, programs and help the dean meet the college's needs.

LSUSVM alumni are encouraged to visit [http://www.vetmed.lsu.edu/alumni\\_resources](http://www.vetmed.lsu.edu/alumni_resources) to provide the college with their most up-to-date contact information or to visit <http://www.vetmed.lsu.edu/giving.htm> for more information about giving opportunities.

To make an online gift, go to <https://www.lsufoundation.org/contribute.php> and select the School of Veterinary Medicine as the beneficiary unit.



[Back to the top](#)

## UPCOMING EVENTS AND IMPORTANT DATES

<b>February 6</b>	<b>Year III Coating Ceremony</b>
February 5-8	Louisiana VMA Winter Meeting, New Orleans, La.
<b>February 6</b>	<b>LVMA Winter Meeting SVM Alumni Reception</b>
February 6-8	Arkansas VMA Winter Meeting, Hot Springs, Ark.
<b>February 7</b>	<b>Arkansas VMA SVM Alumni Reception, Hot Springs, Ark.</b>
<b>February 7</b>	<b>Open House, 9 a.m.-4 p.m., SVM, Baton Rouge, La.</b>
February 15-19	Western Veterinary Conference, Las Vegas, N.V.
<b>February 16</b>	<b>Western Veterinary Conference Hospitality Suite. 7 a.m.-5:30 p.m., Coral Suite on the 61<sup>st</sup> floor of Mandalay Bay in Las Vegas, N.V.</b>
<b>February 18</b>	<b>Dean's Grand Rounds, 8 a.m.-9 a.m., SVM Auditorium</b>
<b>February 23-24</b>	<b>Mardi Gras Holidays, Years I and II</b>
<b>February 24</b>	<b>Mardi Gras Holiday for Faculty, Staff and Students</b>

For information on these and other events, please go to the School's website at [www.vetmed.lsu.edu](http://www.vetmed.lsu.edu).

[Back to the top](#)

## CLASSIFIED ADS FROM LSU SVM ALUMNI

ORLANDO/OVIEDO - UCF Area and/or DOWNTOWN ORLANDO/WINTER PARK. Looking for Associate Veterinarian. Come work in a laid back, professional environment, modern and progressive facility, great support staff, practice excellent quality medicine, and live a good quality life. Work between 36-40 hours a week as a full time. No emergencies/after hours, all referred to emergency hospital! Very fast growing, 2 location, 3-4 doctor practice. Great benefits and compensation package available, and negotiable. **For more information, fax or email your resume to 407-366-0753 - [dr.duprey@corrinevet.com](mailto:dr.duprey@corrinevet.com). ATTN: Enrique Duprey, DVM - LSU 2002.**



Locally owned Banfield hospital in Lafayette, La. searching for a fulltime associate and a relief veterinarian. Relaxed environment practicing high quality small animal medicine and surgery. **Please call Dr. Scott Tate (LSU 1994) at 337-984-1668 or e-mail [om0638@banfield.net](mailto:om0638@banfield.net).**

**Associate position available in Hammond, LA** in a mixed animal practice. Our clinic is approximately 70% small animal and 30% large animal. Salary based on experience, new graduates encouraged to apply. Compensation package includes all fees related to licensure, malpractice and liability insurance, CE, AVMA, LVMA and local VMA dues. **Please contact Dr. Jody Bondurant (LSU 2004) at Knight and Associates Veterinary Practice, 46631 River Road, Hammond, LA 70401. 985-345-0440 [bondurantjb@yahoo.com](mailto:bondurantjb@yahoo.com)**

**Are you looking for career options?** The USDA, Food Safety & Inspection Service is currently hiring veterinarians in Del Rio, Plainview, Amarillo, and Cactus, Texas. Our Public Health Veterinarians work in Meat and Poultry establishments and are vital to the safety of the American Food Supply. We offer a competitive salary - a new veterinarian will make at least \$54,494.00 (GS-11) to start. Some salaries will be higher, depending on the location and qualifications of the person selected. Many of our Public Health Veterinarian positions advance to the next grade after one year of satisfactory performance and conduct. The starting salary for the next grade (GS-12) is \$65,315.00. We offer a recruitment bonus of

25% of starting salary with a one year service agreement, as well as a paid move. We offer paid sick and vacation leave, health, life, and dental insurance, and an attractive retirement plan. In addition, any work performed over 40 hours per week is compensated, and training is provided. Please feel free to contact us if you are interested or would like more information!

**Submitted by Dr. Jennifer Beasley-McKean (LSU 1993).**

 800-370-3747, x2556  (612) 370-2377 [Jennifer.McKean@fsis.usda.gov](mailto:Jennifer.McKean@fsis.usda.gov)

**Associate Veterinarian wanted - come for a visit - stay for a career!!**

Phone: 775-575-5851

Fax: 775-575-6606

State: Nevada

A great opportunity to get in on the ground floor of a brand new facility! Our small animal general practice is steadily growing and we are breaking ground in the immediate future for a new clinic building. We have an excellent support staff, who enjoy what they do; great clientele, and we are in the fastest growing county in Nevada. We offer exclusively laser surgery, quality medicine and work in a great atmosphere with its fair share of challenges. Clientele are excellent and we have easy access to specialists. Fernley is a great safe place to raise kids, we still have a small town farming community atmosphere complete with our well known junior and senior pro rodeo right here in town. Fernley Nevada is almost rural - but close to Reno, Nevada, to the northwest and Fallon naval air station to the southeast. Lake Tahoe with all its summer and winter recreation opportunities is a 2 hour easy drive from here. New graduates welcomed, mentorship program is in place. Salary is negotiable DOE, standard benefits package offered. **Contact Dr. Laura Remsen (LSU 1990) @ 775-575-5851 or send resume to Animal Care Center, 805 E Main St., Suite D, Fernley, NV 89408. Email - [animal.cc@earthlink.net](mailto:animal.cc@earthlink.net).**

[Back to the top](#)

This e-mail newsletter is designed to update LSU SVM alumni, faculty, staff and students, Louisiana veterinarians and the public about the School and its activities. If you do not wish to receive this publication, please reply to this e-mail and put "Unsubscribe" in the subject line. Please feel free to forward this newsletter to anyone you feel would be interested or would benefit from it. If this e-mail was forwarded to you and you would like to be added to the newsletter e-mail list, please go to [www.vetmed.lsu.edu](http://www.vetmed.lsu.edu) and click on "Subscribe to LSU SVM's free monthly newsletter." Thank you.

Ginger Guttner

Public Relations Coordinator

LSU School of Veterinary Medicine

Baton Rouge, LA 70803

Phone: (225) 578-9922

E-mail: [gguttner@vetmed.lsu.edu](mailto:gguttner@vetmed.lsu.edu)

Web: [www.vetmed.lsu.edu](http://www.vetmed.lsu.edu)